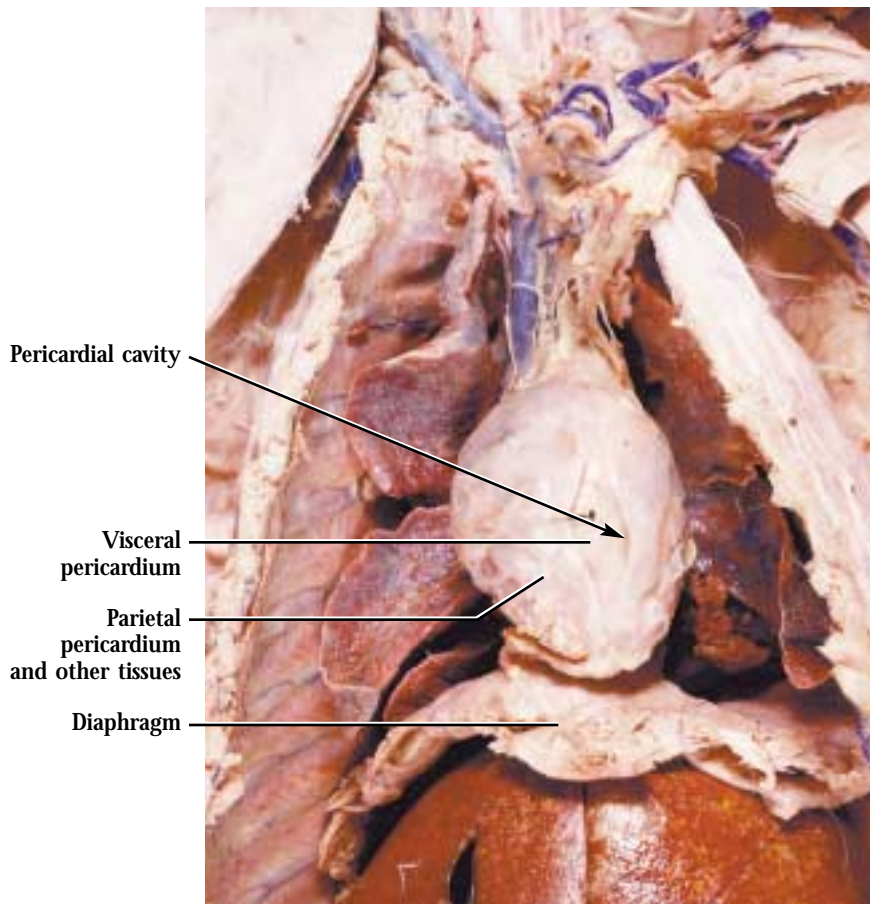


B Thoracic mesenteries



C Pericardia

pericardium defines the potential space called the pericardial cavity and then reflects over the surface of the heart as the **visceral pericardium** [Figure 3-4C]. In contrast to the pleura, the parietal pericardium is intimately associated externally with other tissues forming the pericardial sac.

MESENTERIES OF THE ABDOMINOPELVIC CAVITY

Carefully separate the diaphragm from the liver and identify the whitish area, the **central tendon of the diaphragm**, where the muscles of the diaphragm converge. This is also the site of contact between the liver and the diaphragm. Three ligaments can be identified between the diaphragm and the liver. The most prominent of these is the **falciform ligament** found between the left and right halves of the liver and extending to the ventral abdominal wall. The thickened free margin of this membrane is the **round ligament**, a remnant of a fetal blood vessel. The continuation of the falciform ligament