

Posterior vena cava

Dorsal aorta

Deep ilial circumflex
artery and vein

External iliac artery

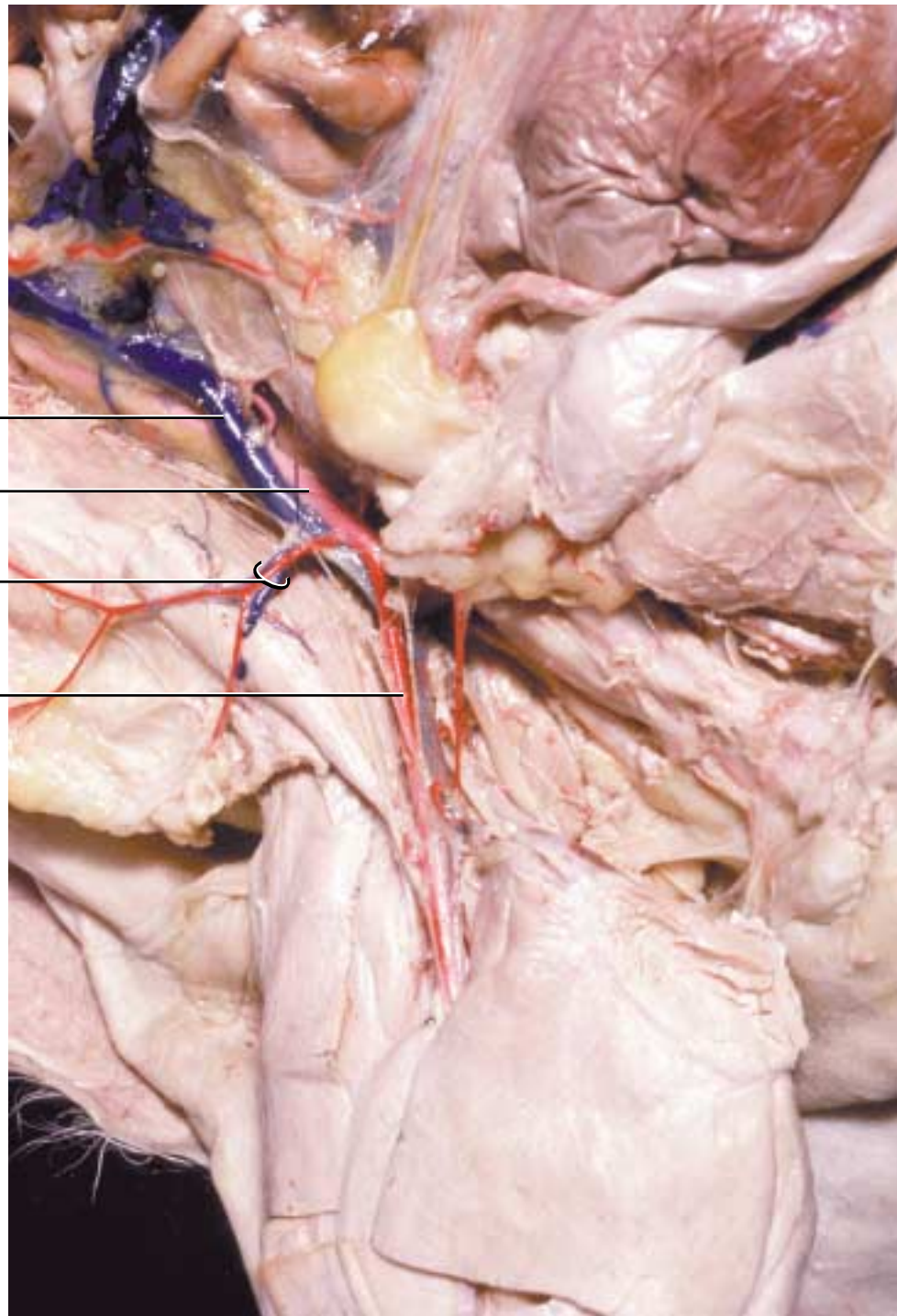


FIGURE 8-20 Deep iliocircumflex artery.

spermatic cord as it makes its journey to the scrotum in the male.

When the external iliac a. appears outside the body wall on the medial surface of the leg, it is now called the **femoral artery**. The first of several branches, the **lateral femoral circumflex artery**, emerges laterally and carries blood to the quadriceps complex (the rectus femoris, vastus lateralis, vastus medialis, and vastus intermedius) as well as the

sartorius and tensor fasciae latae muscles. A somewhat more distal medial branch, the **muscular artery**, supplies blood to the adductors, gracilis, and semimembranosus muscles. As the femoral a. approaches the knee, it gives off the **articular artery** that transports blood to the gracilis, semimembranosus, and vastus lateralis muscles. At this point, or slightly distal, the superficial **saphenous artery** originates from the femoral and courses over the medial