

FIGURE 11.14 Dorsal view of a 33-hour chick embryo whole mount with 13 somite pairs (Stage 11) showing section planes of Fig. 11.15.

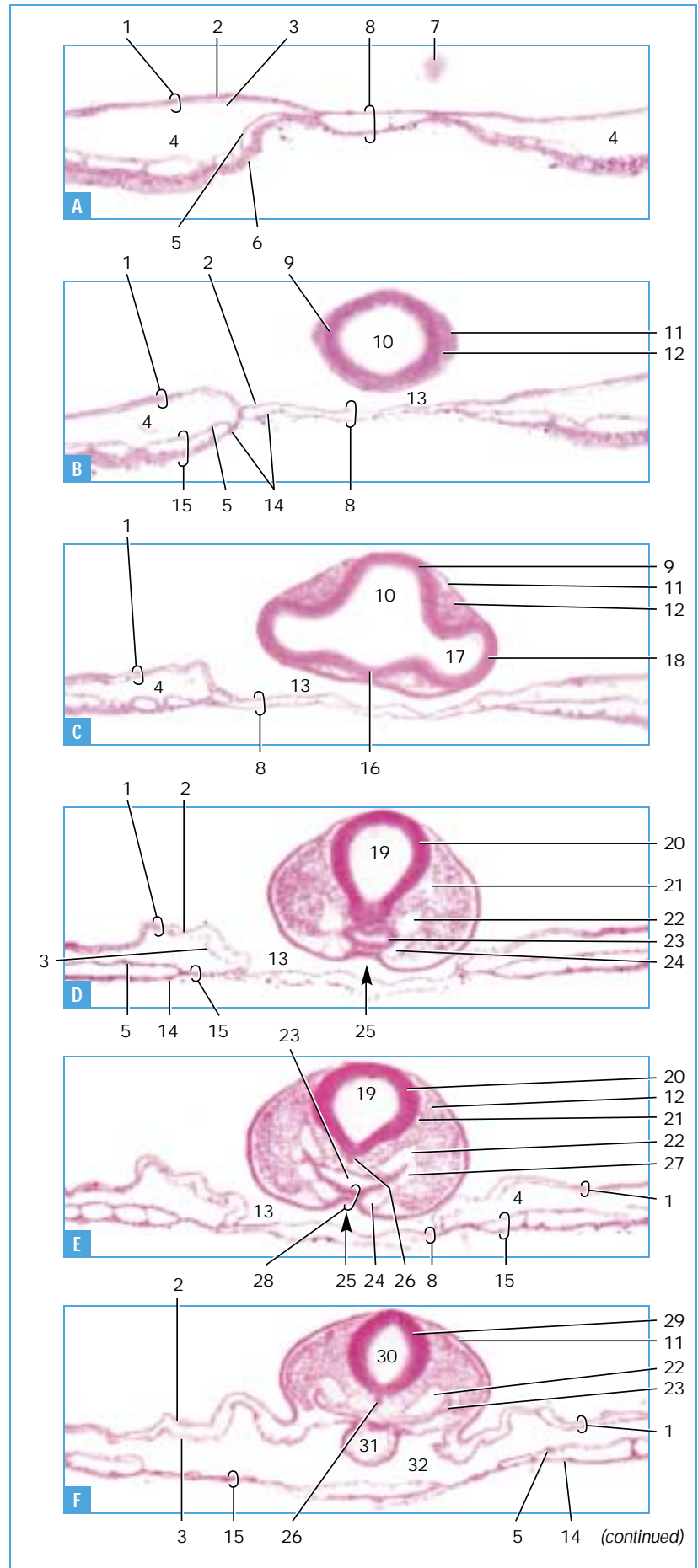


FIGURE 11.15 Transverse sections of a 33-hour chick embryo with 12 somite pairs (Stage 11-) through the levels shown in Fig. 11.14. Dorsal is up.